

Disclaimer

© 2017 Your Stat Class. Latrica L. Williams

ALL RIGHTS RESERVED. No part of this work covered by the copyright herein may be reproduced, transmitted, stored, or used in any form or by any means, graphic, electronic, or mechanical including but not limited to photocopying, recording, scanning, digitizing, taping, Web distribution, information networks, information storage and retrieval systems, without written permission of the company or author. Use in violation of these terms and conditions is prohibited.

REPRODUCING THIS WORK BY ANY MEANS WILL RESULT IN LEGAL ACTION. VIOLATORS WILL BE PROSECUTED TO THE FULL EXTENT OF THE LAW.

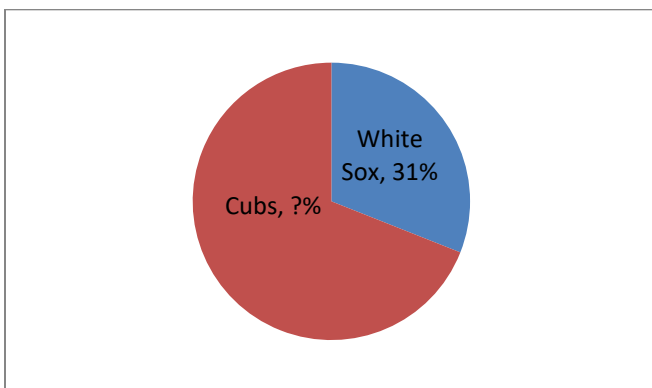


Chapter 3 Homework

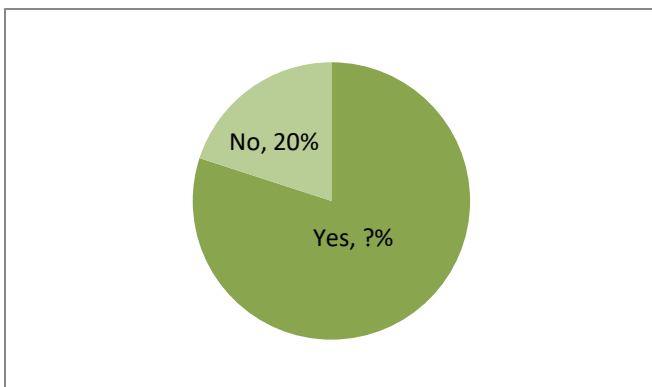


Chapter 3 Homework

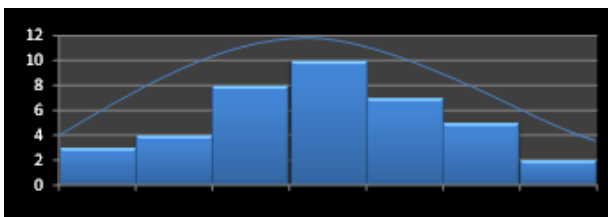
1. True or False. Frequencies in a frequency distribution should always sum to the sample size.
2. Name two graphs that can be used to graphically represent qualitative data.
3. Given the following pie chart, what percent of fans selected the Chicago Cubs as their favorite team?



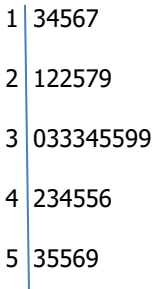
4. Given the following pie chart, what percent of teenagers answered "Yes" to the question...*Do you own a cell phone?*



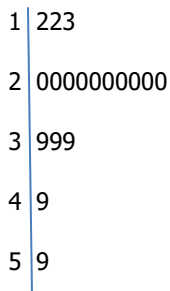
5. Name two graphs that can be used to graphically represent quantitative data.
6. The shape of a distribution is usually described as _____, _____, or _____.
7. Given the following histogram, what is the shape of the distribution?



8. True or False. A stem and leaf plot is sometimes preferred by researchers because it allows them to view each data value.
9. Given the following stem and leaf plot, what is the shape of the distribution?



10. Given the following stem and leaf plot, what is the shape of the distribution?



Answers

1. True
2. Bar graph, pie chart
3. 69%
4. 80%
5. Histogram, stem and leaf plot
6. Symmetrical, skewed left, skewed right
7. Symmetrical
8. True
9. Symmetrical
10. Skewed right

